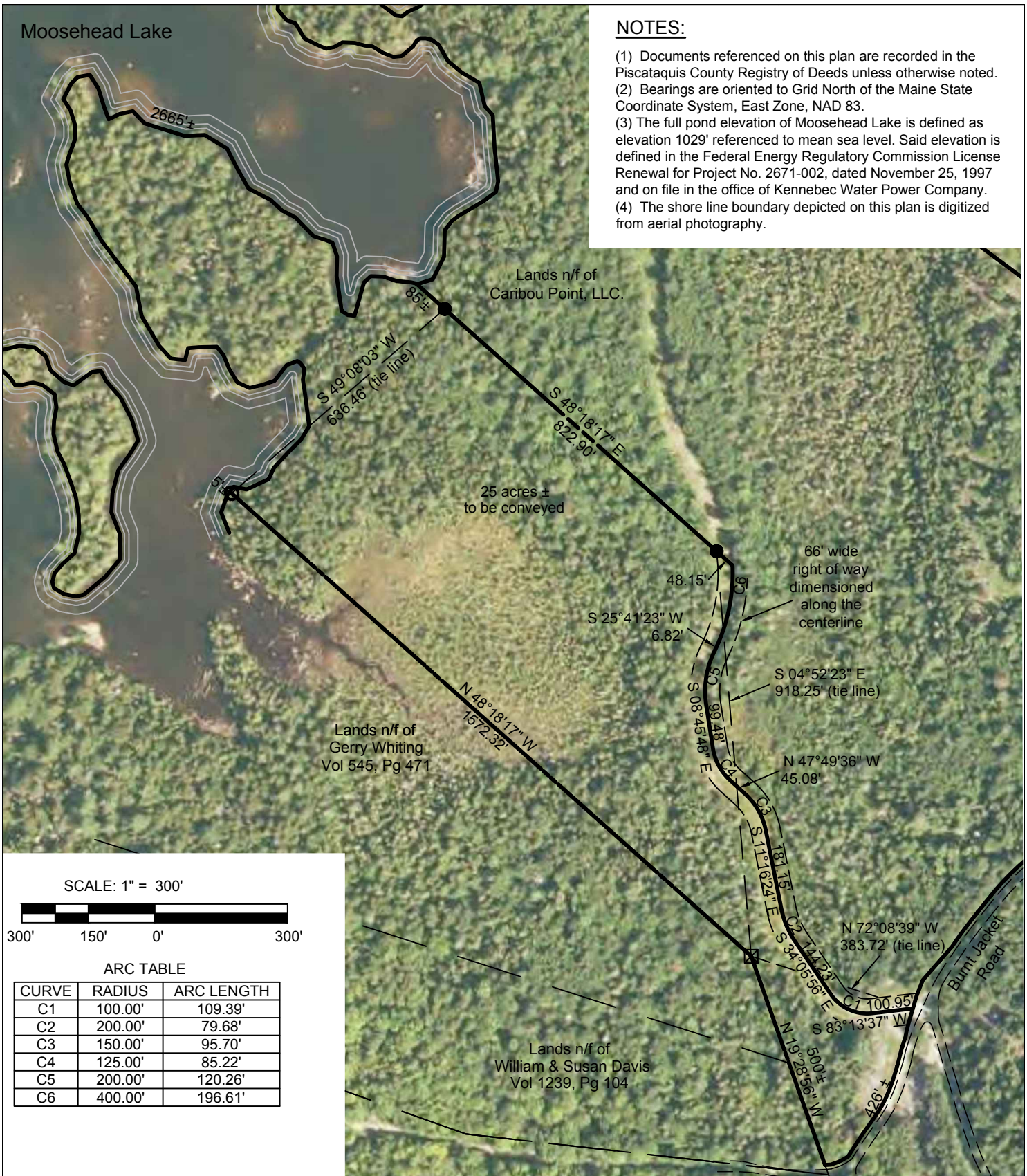


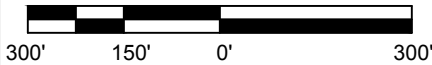
Moosehead Lake

NOTES:

- (1) Documents referenced on this plan are recorded in the Piscataquis County Registry of Deeds unless otherwise noted.
- (2) Bearings are oriented to Grid North of the Maine State Coordinate System, East Zone, NAD 83.
- (3) The full pond elevation of Moosehead Lake is defined as elevation 1029' referenced to mean sea level. Said elevation is defined in the Federal Energy Regulatory Commission License Renewal for Project No. 2671-002, dated November 25, 1997 and on file in the office of Kennebec Water Power Company.
- (4) The shore line boundary depicted on this plan is digitized from aerial photography.



SCALE: 1" = 300'



ARC TABLE

CURVE	RADIUS	ARC LENGTH
C1	100.00'	109.39'
C2	200.00'	79.68'
C3	150.00'	95.70'
C4	125.00'	85.22'
C5	200.00'	120.26'
C6	400.00'	196.61'

Exhibit A

a portion of the land described in
 Volume 1662, Page 118
 Burnt Jacket Road - Town of Beaver Cove, Piscataquis County, Maine
 for
 Caribou Point, LLC.

